



Technical data

Connection: Thread acc. to DIN 2999

Diameters size: 3/8" up to 2"

Pressure range: PN25 (263 psi)

Temperature range: -20°C up to +120°C
(depending from working pressure)

Materials:

- Body: brass nickel plated
- Ball: brass chrome plated
- Ball seals: PTFE
- Handle: steel zinc plated with red colour

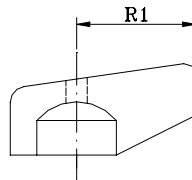
Application: House- and sanitary technology, Plant factory for media: Water, Oils, Fuels, Compressed air etc.

Design features:

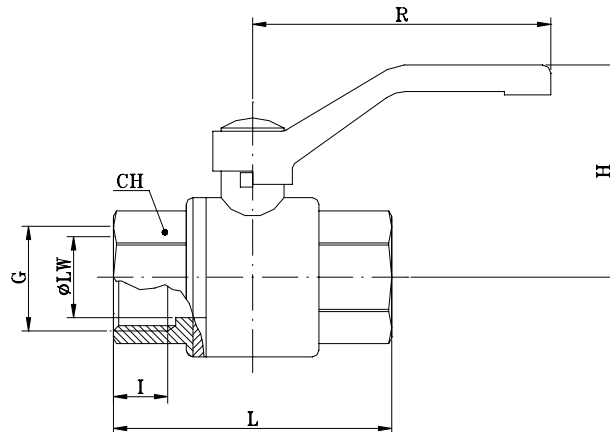
- Full bore
- ♦ Thread acc. to NPT, Oil and grease free (optional)

 **More information on your inquiry!**

Art. 301 (t-handle up to size 1 1/4")



Art. 300



Dimensions in mm

			3/8"	1/2"	3/4"	1"	1 1/4"	1 1/2"	2"			
G	-	-								-	-	-
øLW	-	-	11	15	20	25	32	40	50	-	-	-
L	-	-	40	49	57	67	80	91	107	-	-	-
H	-	-	42	45	48	57	77	78	84	-	-	-
R	-	-	73	83	83	90	110	110	130	-	-	-
R1	-	-	26	26	26	43	50	-	-	-	-	-
I	-	-	9,0	11,0	11,4	13,5	14,8	16,0	17,5	-	-	-
CH	-	-	20,8	25,5	25,5	38	47,5	54,4	66,6	-	-	-
KV	-	-	7,3	13	25	49	100	140	215	-	-	-
PN	-	-	25	25	25	25	25	25	25	-	-	-
Kg	-	-	0,15	0,20	0,30	0,50	0,70	1,10	1,70	-	-	-